



video
**creation
station**

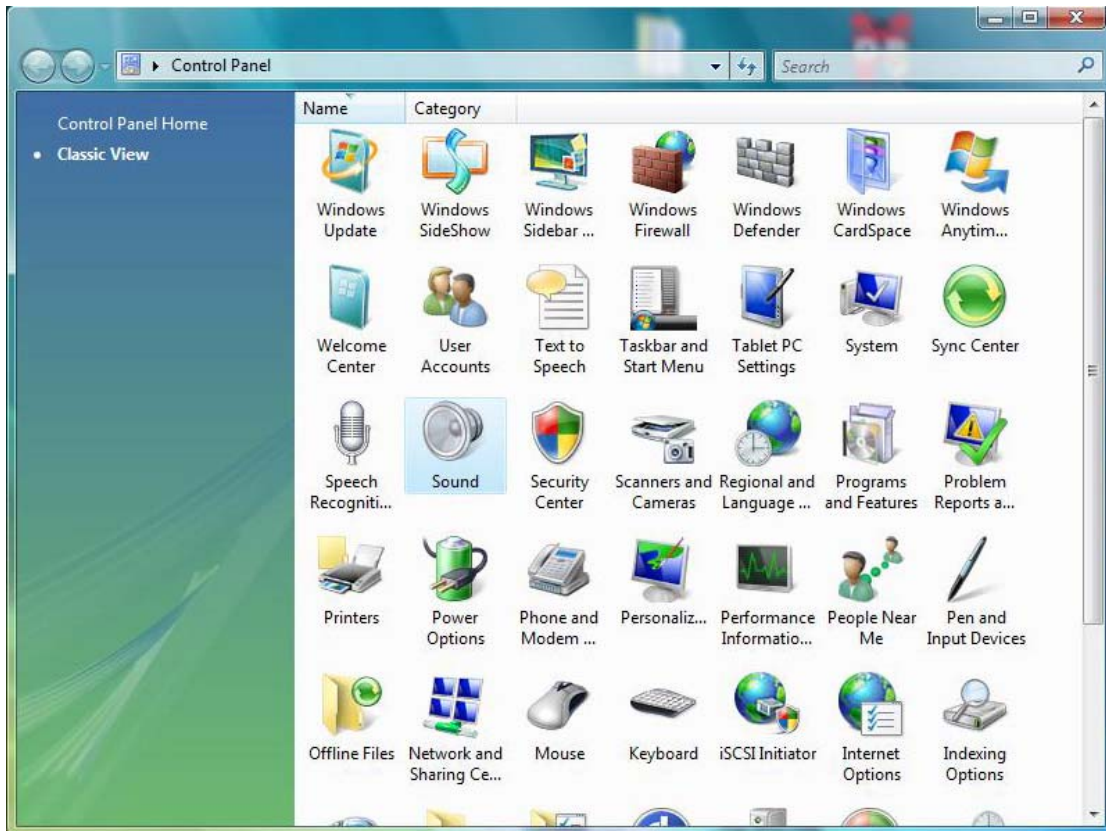
[FAQ](#)

Note: Please check back for weekly FAQ updates.

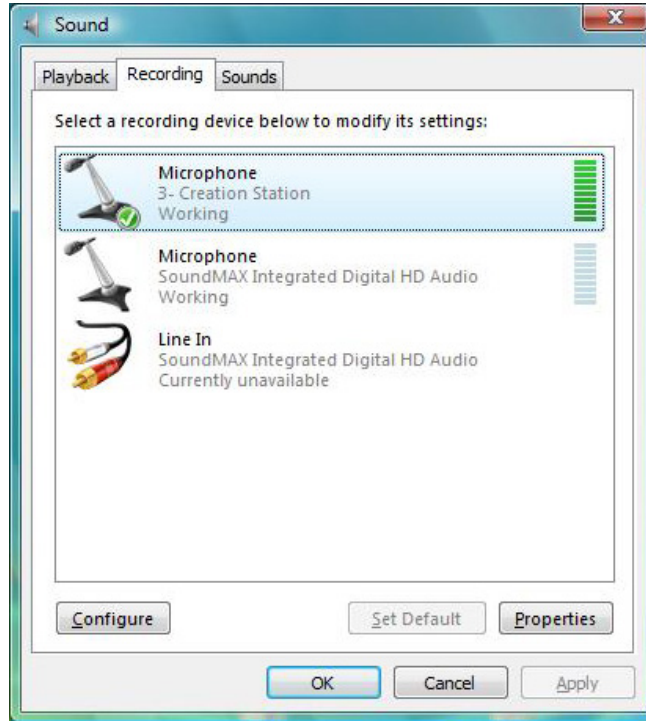
Q: My computer has Windows Vista, and the microphone isn't working correctly.

A: The default microphone level in Vista was set to +128 decibels by Microsoft. You will need to change this to 80 decibels. Here is how to change it:

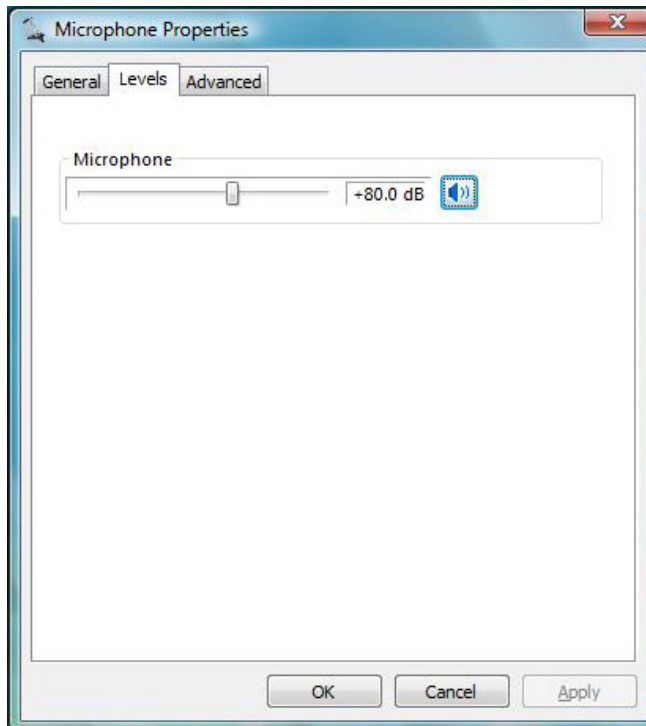
Click: Start / Settings / Control Panel and choose "Sound"



Under the "Recording" tab, double click "Microphone"



Then slide the tab down to +80.

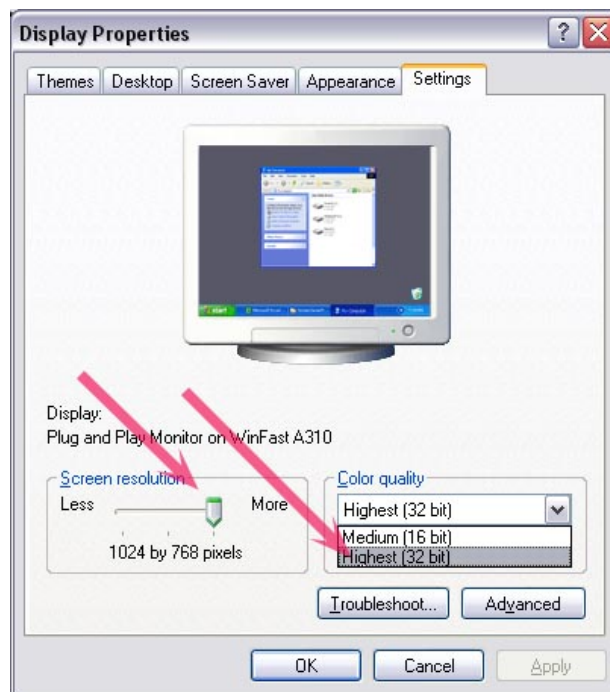


Q: I am having trouble using my Creation Station hardware or software.

A: Try closing all other PC applications while using the Creation Station. Restart your PC, unplug and re-plug-in the camera. Also, please make sure you are using the latest software. This can be downloaded at any time from www.riproarmedia.com . You should uninstall your current software before re-installing any new software.

Q : I see weird wordings or symbols on Creation Station screens

A : Right click your desktop -> Properties -> Settings -> make sure the color quality setting is set to 32 bit (see image below)



Q : The Creation Station screen does NOT fit the display resolution

A : Right click your desktop -> Properties -> Settings -> make sure the screen resolution is set to at least 1024 x 768 (image above)

Q : LEDs do not light up on the camera while filming

A : push the AUTO / OFF button to the AUTO position, when light level gets low, LEDs will turn on automatically

Q : My computer does not recognize Creation Station camera

A : Unplug your camera and try other USB ports, preferably at the back of your computer

Q: I cannot see any video in the "capture" tab.

A: Make sure that your camera is plugged in correctly. Try using another USB port, preferably one in the back of your computer.

Q: My video appears blurry or looks like there are smudges on it.

A: Try wiping the lens with a soft, clean cloth or tissue.

Q: I am having trouble knocking out the green screen evenly.

A: Try using even lighting, and make sure there are no large creases or folds in the screen.